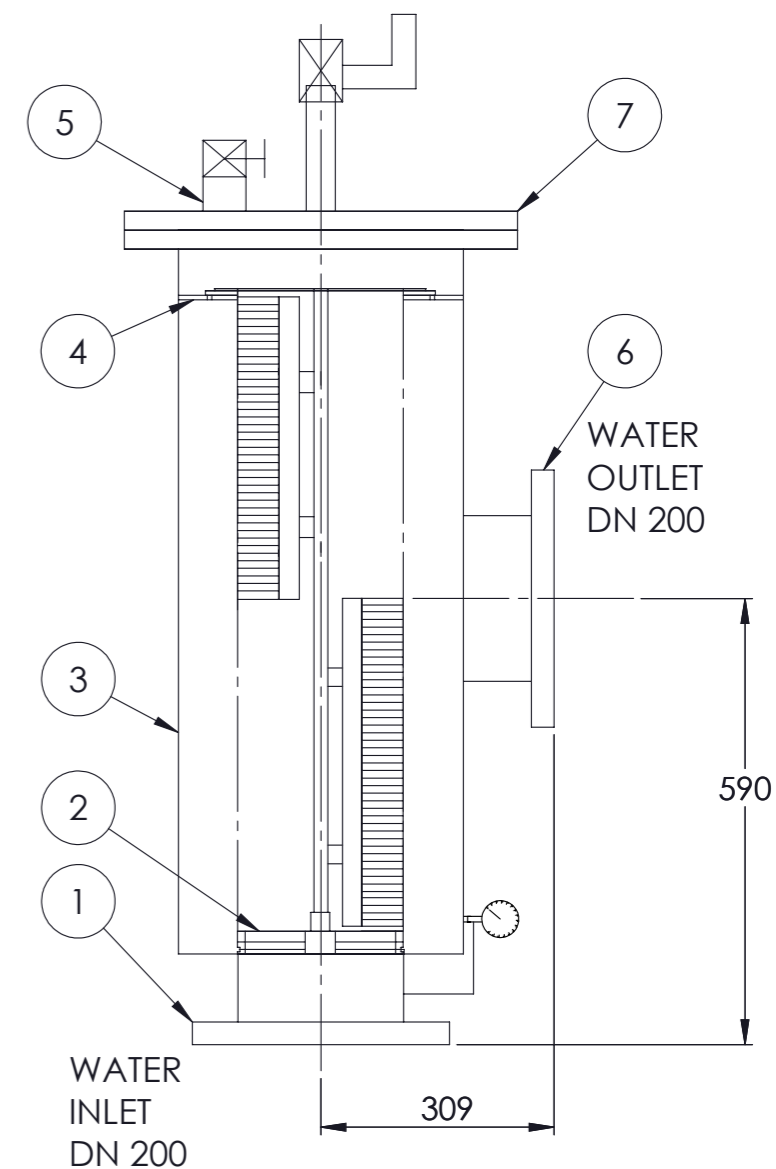
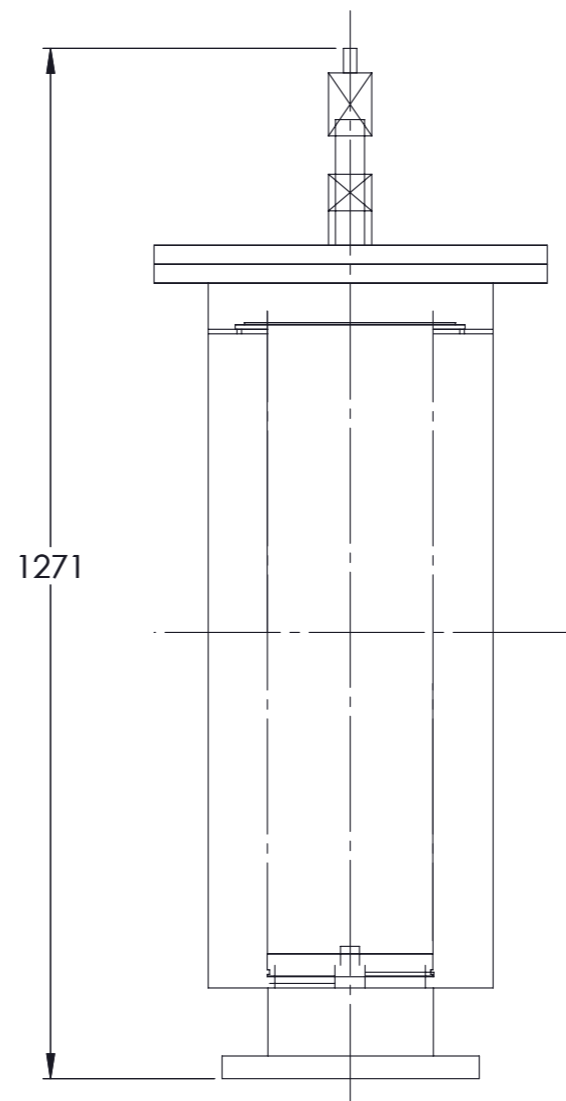
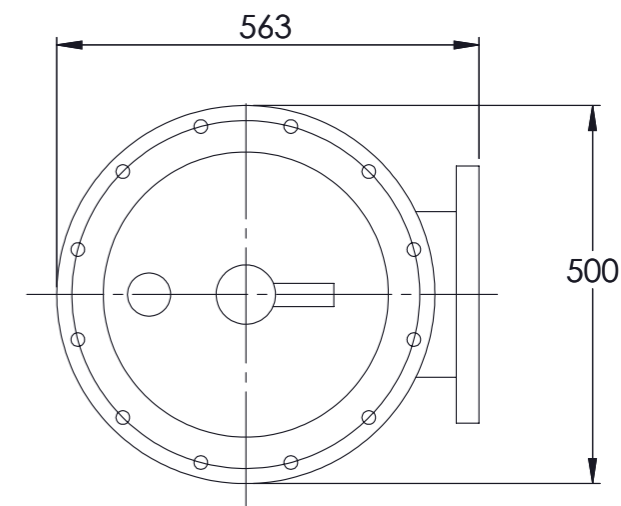


ITEM	PART No.	DESCRIPTION	QTY	Material
1	DN200	Flange	1	304
2		Supporting Ring	1	304
3	Ø219 x 800	Screen	1	304
4		Screen Fix Plate	1	304
5	DN50	Drain Out	1	304
6	DN200	Flange	1	304
7	DN350	Cover	1	304



TECHNICAL DATA

Nominal Flow Rate (at 2m Head Loss)	m ³ / hr	320 m ³ /hour
	L / s	89 L/sec
Approximate Weight	Empty	102 kg
Inlet & Outlet Connections (Standard Flanges)	AS 2129	DN200 Table D

Filter Area: 5500 m²

Max. Working Pressure: 10 bar
Max. Working Temperature: 55 C

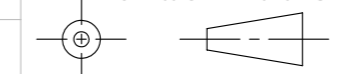
PROPRIETARY AND CONFIDENTIAL

THE INFORMATION CONTAINED IN THIS DRAWING IS THE SOLE PROPERTY OF FILTAWORX PTY. LTD. ANY REPRODUCTION IN PART OR AS A WHOLE WITHOUT THE WRITTEN PERMISSION OF FILTAWORX PTY. LTD. IS PROHIBITED.

		MATERIAL	AS SHOWN IN DETAIL DRAWING
		FINISH	NATURAL
NEXT ASSY	USED ON		
APPLICATION			DO NOT SCALE DRAWING

	NAME	DATE
DRAWN	SD	02/12/2021
CHECKED	-	-
ENG APPR.	-	-
MFG APPR.	-	-
Q.A.	-	-

DIMENSIONS ARE IN mm
TOLERANCES: ±0.25 MACHINING
±0.25° ANGULAR
UNLESS OTHERWISE SPECIFIED



FILTAWORX

TITLE
200MM 304SS SEMI AUTOMATIC
BRUSH FILTER

SIZE A3 DWG. NO. FWSA1-200 REV. 0

SCALE: N.T.S. WEIGHT: approx. 102 kg SHEET: 1 OF 1